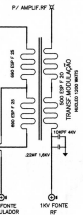
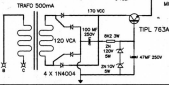
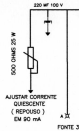
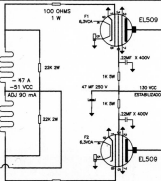


Typ	Qtd	Number	FONTE 1000 VDC 1 AMP	Rev	
1	1	22	36	1978	Proj. by: PYZCAS
2	1	22	36	1978	Proj. by: PYZCAS
3	1	22	36	1978	Proj. by: PYZCAS
4	1	22	36	1978	Proj. by: PYZCAS



Título			
MODULADOR			
Proj.	Modelo	500 W	Nº
Data: 22 SET 1978			
Elaborado: M. S. S. S.		Desenhado: P. S. S.	
Folha: 2		de 4	

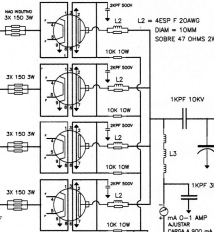
AJUSTAR
DELTA 310
COM 40MA
APROX. 12 WATTS

L1 = 17 ESP F18 AWG
COMPR 30 MM
DIAM 40 MM
LINK 3 ESP

EXCITAR
COM
DELTA 310



CORRENTE GRADE
NOMINAL
32 mA



4 X EL509

20K 20W

1KV SECUNDARIO
MODULADOR



P/ANTENA
CABO 50 OHMS
RG 213

L5
DIAM = 70MM
LARG = 90 MM
9 ESP F10 9 AWG

1KV 10KV

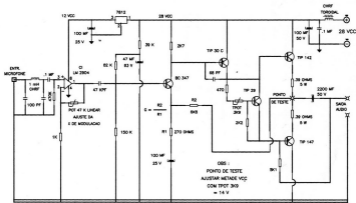
100 PF

1200 PF

L3,L4 = CHRPF 2mH
DIAM EXT 23 MM
FIO 25 AWG
LARG. 130MM

mA 0-1 AMP
AJUSTAR
CARGA A 900 mA

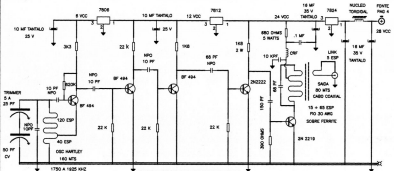
TÍTULO: AMPLIFICADOR FINAL RF		
Proj.:	Elaborado:	Rev:
C:	SAIDA 800 W	
Data: 22 SET 1978		
Elaborado por: PPG/CS		
Plano: 5400-RF-S&T-0001		
3 of 9		



BARRAMENTO RIO COBRE 4MM

MONTAGEM SOBRE CIRC IMPRESSO
EM CAIXA BLINDADA
ESPESSURA 8 MM

TÍTULOS		AMPLIFICADOR DE AUDIO	
Des	Numero	Rev	
J	001	01	
Excitador P.V. 2x EL50B			
Data: 22 SET 1978 - Desenho: PYB/ARL			
Projeto: AMP 00102-001 (Rev. 1) - p. 1			



BARRAMENTO FIO DE COBRE 4MM
 SOBRE CIRCUITO IMPRESSO
 MONTADO EM CAIXA BLINDADA
 ESPESSURA 8 MM

Tubo VFO C/ TRANSISTORES			
Tubo	Number	OSC 160 METROS	Rev
Proj	22 SET 1978	Desenhado por	PT-2035
Filamento	PT-2035	3	of 4



